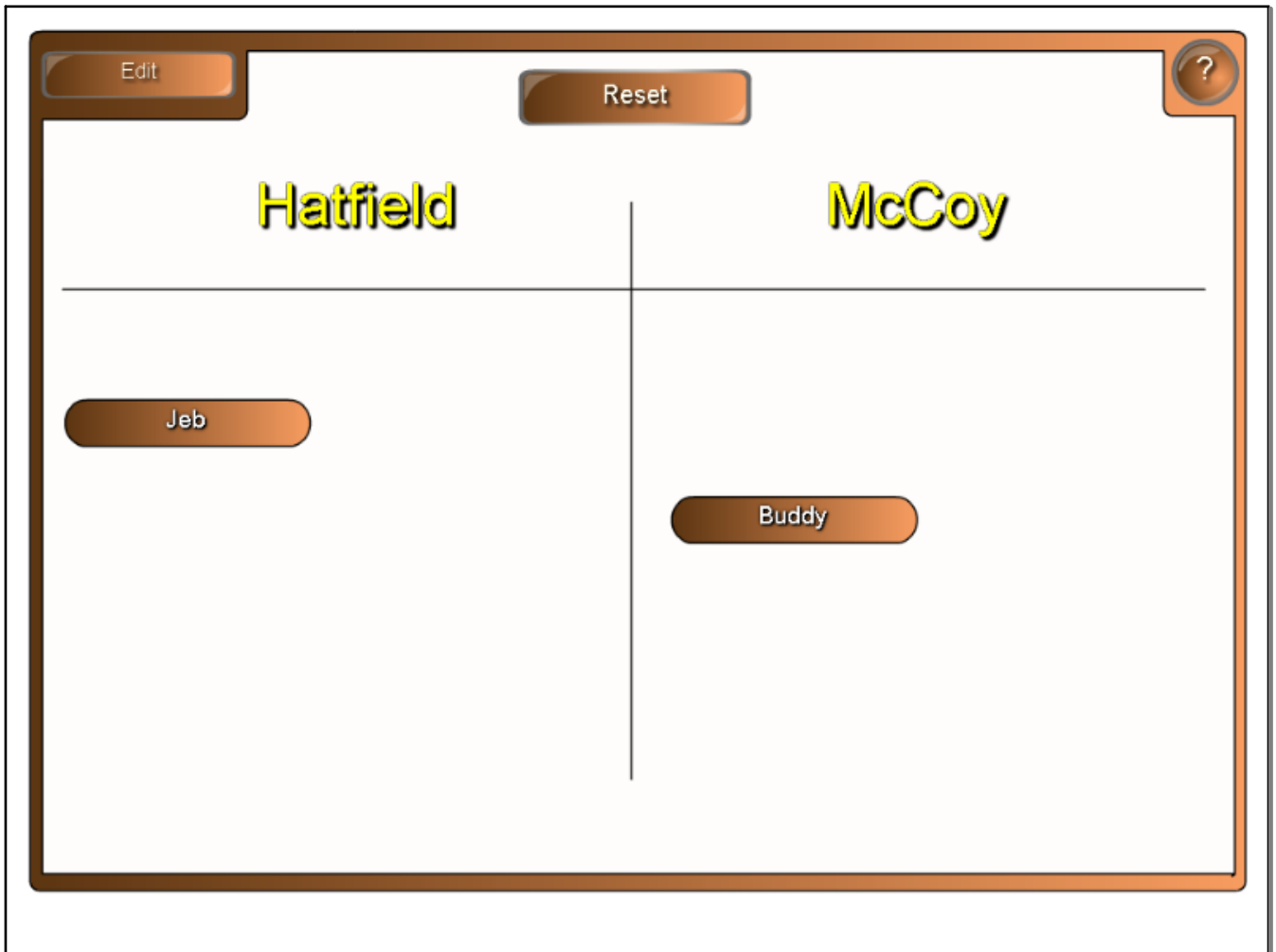
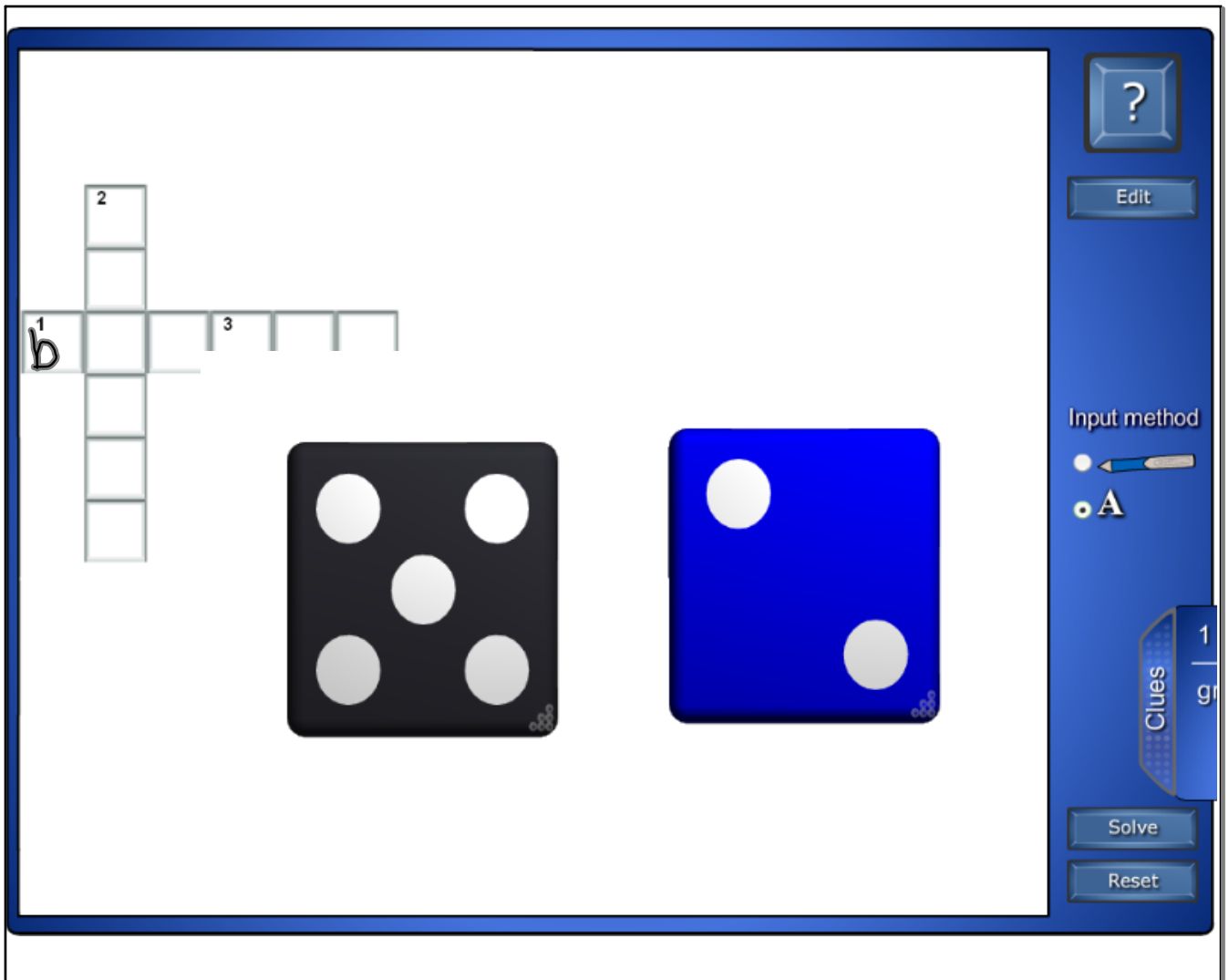


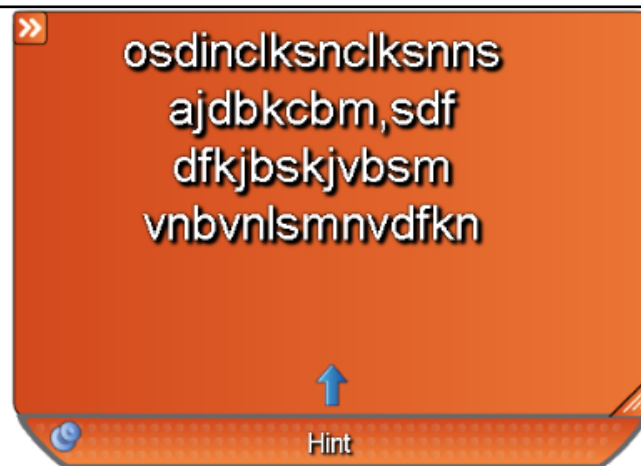
Press Select and state the country that the flag belongs to.







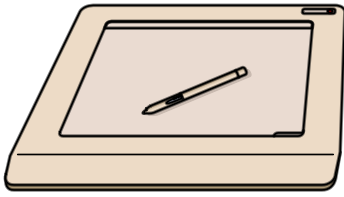




» Drag text here

Almost time to create
your lesson







Level	Description	Equation	Standard
1	You will begin by finding the area of a circle.	$A = \pi r^2$	6.1.B.1.c; 6.1.B.2.e; 6.2.A.1.c; 6.2.A.2.d; 6.3.c.1.a; 7.1.B.1.c; 7.1.B.2.e; 8.1.B.3.f; 8.3.C.1.a; CLG1.2.5; CLG2.1.1; CLG2.1.2; CLG2.1.4; CLG2.1.2; CLG2.1.4; CLG2.2.2; CLG2.3.2
2	In this level, you will convert diameter to radius and then find the area of the circle.	$A = \pi (d \div 2)^2$	6.1.B.1.c; 6.1.B.2.e; 6.2.A.1.c; 6.2.A.2.d; 6.3.C.1.a; 7.1.B.1.c; 7.1.B.2.e; 8.1.B.3.f; 8.3.C.1.a; CLG1.2.5; CLG2.1.1; CLG2.1.2; CLG2.1.4; CLG2.2.2; CLG2.3.2
3	In this level, you are given the area of a circle and will solve for the radius.	$A = \pi r^2$	7.1.B.1.c; 7.1.B.2.e; 8.1.B.3.f; 8.3.C.1.a; CLG1.2.5; CLG2.1.1; CLG2.1.2; CLG2.1.4; CLG2.2.2; CLG2.3.2
4	In the final level of Area of Circles, you will find the area between 2 circles by subtracting the two areas.	$A = (\pi r_1^2) - (\pi r_2^2)$	7.1.B.1.c; 7.1.B.2.e; 8.1.B.3.f; 8.3.C.1.a; CLG1.2.5; CLG2.1.1; CLG2.1.2; CLG2.1.4; CLG2.2.2; CLG2.3.2

Sample Problem:

The Pancake House specializes in "silver dollar" pancakes, which have a radius of 5 cm. What area (in square centimeters) does each silver dollar cover on the griddle? (Round the answer to the nearest whole square centimeter.)

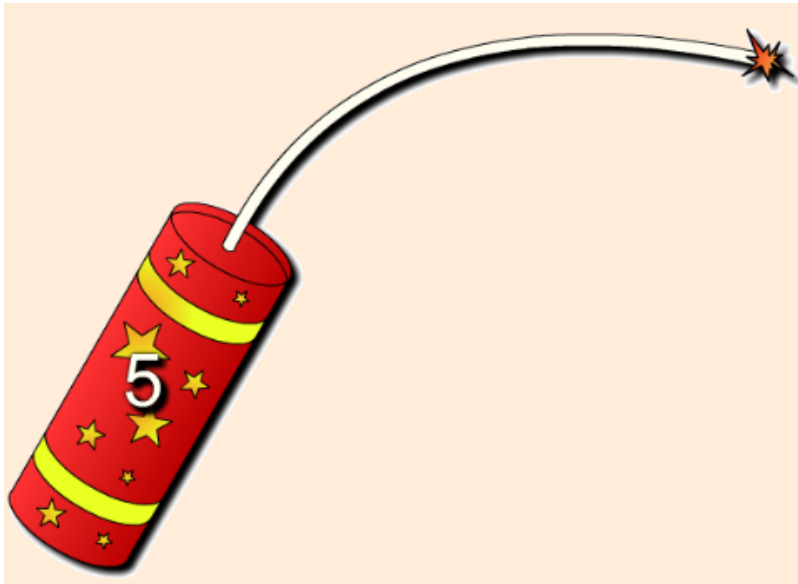


Find the pairs.





Count down!



Fire cracker



Click the dice and describe the emotion shown.



Attachments

MeanMedianAndMode.notebook

Maryland 5.0 Content Guide Oct 08.doc

66200.flv